



Title Plan - LT 577388

Survey Number LT 577388
Surveyor Reference 1813 STG 15 A B
Surveyor Campbell Lloyd Harvey
Survey Firm Civilplan Consultants Limited
Surveyor Declaration

Survey Details

Dataset Description Lots 1, 2, 6, 7, 9, 10, 11, 813 - 854 Being a Subdivision of Lot 2000 DP 547959
Status Initiated
Land District North Auckland
Submitted Date
Survey Class Class A
Survey Approval Date
Deposit Date

Territorial Authorities

Waikato District

Comprised In

RT 936798

Created Parcels

Parcels	Parcel Intent	Area	RT Reference
Lot 1 Deposited Plan 577388	Fee Simple Title	0.0228 Ha	Multiple
Lot 2 Deposited Plan 577388	Fee Simple Title	0.0228 Ha	Multiple
Lot 6 Deposited Plan 577388	Vesting on Deposit for Local Purpose Reserve	2.0505 Ha	1065377
Lot 7 Deposited Plan 577388	Vesting on Deposit for Local Purpose Reserve	0.5628 Ha	1065378
Lot 9 Deposited Plan 577388	Vesting on Deposit for Road	0.4924 Ha	
Lot 10 Deposited Plan 577388	Vesting on Deposit for Road	0.0085 Ha	
Lot 11 Deposited Plan 577388	Vesting on Deposit for Road	0.0035 Ha	
Lot 813 Deposited Plan 577388	Fee Simple Title	0.2403 Ha	1065334
Lot 814 Deposited Plan 577388	Fee Simple Title	0.1111 Ha	1065335
Lot 815 Deposited Plan 577388	Fee Simple Title	0.1128 Ha	1065336
Lot 816 Deposited Plan 577388	Fee Simple Title	0.1225 Ha	1065337
Lot 817 Deposited Plan 577388	Fee Simple Title	0.1385 Ha	1065338
Lot 818 Deposited Plan 577388	Fee Simple Title	0.1430 Ha	1065339
Lot 819 Deposited Plan 577388	Fee Simple Title	0.0600 Ha	1065340
Lot 820 Deposited Plan 577388	Fee Simple Title	0.0605 Ha	1065341
Lot 821 Deposited Plan 577388	Fee Simple Title	0.0832 Ha	1065342
Lot 822 Deposited Plan 577388	Fee Simple Title	0.0894 Ha	1065343
Lot 823 Deposited Plan 577388	Fee Simple Title	0.0732 Ha	1065344
Lot 824 Deposited Plan 577388	Fee Simple Title	0.0601 Ha	1065345
Lot 825 Deposited Plan 577388	Fee Simple Title	0.0602 Ha	1065346

Title Plan - LT 577388

Created Parcels

Parcels	Parcel Intent	Area	RT Reference
Lot 826 Deposited Plan 577388	Fee Simple Title	0.0602 Ha	1065347
Lot 827 Deposited Plan 577388	Fee Simple Title	0.0631 Ha	1065348
Lot 828 Deposited Plan 577388	Fee Simple Title	0.0501 Ha	1065349
Lot 829 Deposited Plan 577388	Fee Simple Title	0.0495 Ha	1065350
Lot 830 Deposited Plan 577388	Fee Simple Title	0.0472 Ha	1065351
Lot 831 Deposited Plan 577388	Fee Simple Title	0.0634 Ha	1065352
Lot 832 Deposited Plan 577388	Fee Simple Title	0.0686 Ha	1065353
Lot 833 Deposited Plan 577388	Fee Simple Title	0.0608 Ha	1065354
Lot 834 Deposited Plan 577388	Fee Simple Title	0.0608 Ha	1065355
Lot 835 Deposited Plan 577388	Fee Simple Title	0.0663 Ha	1065356
Lot 836 Deposited Plan 577388	Fee Simple Title	0.0619 Ha	1065357
Lot 837 Deposited Plan 577388	Fee Simple Title	0.0608 Ha	1065358
Lot 838 Deposited Plan 577388	Fee Simple Title	0.0608 Ha	1065359
Lot 839 Deposited Plan 577388	Fee Simple Title	0.0677 Ha	1065360
Lot 840 Deposited Plan 577388	Fee Simple Title	0.0688 Ha	1065361
Lot 841 Deposited Plan 577388	Fee Simple Title	0.0601 Ha	1065362
Lot 842 Deposited Plan 577388	Fee Simple Title	0.0680 Ha	1065363
Lot 843 Deposited Plan 577388	Fee Simple Title	0.0604 Ha	1065364
Lot 844 Deposited Plan 577388	Fee Simple Title	0.0601 Ha	1065365
Lot 845 Deposited Plan 577388	Fee Simple Title	0.0633 Ha	1065366
Lot 846 Deposited Plan 577388	Fee Simple Title	0.0629 Ha	1065367
Lot 847 Deposited Plan 577388	Fee Simple Title	0.0615 Ha	1065368
Lot 848 Deposited Plan 577388	Fee Simple Title	0.0624 Ha	1065369
Lot 849 Deposited Plan 577388	Fee Simple Title	0.0651 Ha	1065370
Lot 850 Deposited Plan 577388	Fee Simple Title	0.0640 Ha	1065371
Lot 851 Deposited Plan 577388	Fee Simple Title	0.0620 Ha	1065372
Lot 852 Deposited Plan 577388	Fee Simple Title	0.0620 Ha	1065373
Lot 853 Deposited Plan 577388	Fee Simple Title	0.0620 Ha	1065374
Lot 854 Deposited Plan 577388	Fee Simple Title	0.0620 Ha	1065375
Area A Deposited Plan 577388	Easement		
Area B Deposited Plan 577388	Easement		
Area C Deposited Plan 577388	Easement		
Area D Deposited Plan 577388	Easement		
Area E Deposited Plan 577388	Easement		
Area G Deposited Plan 577388	Easement		
Area N Deposited Plan 577388	Easement		
Area O Deposited Plan 577388	Easement		
Area P Deposited Plan 577388	Easement		
Area Q Deposited Plan 577388	Easement		
Area S Deposited Plan 577388	Easement		
Area T Deposited Plan 577388	Easement		
Lot 2003 Deposited Plan 577388	Fee Simple Title	15.8992 Ha	1065376
Area X Deposited Plan 577388	Easement		
Area Y Deposited Plan 577388	Easement		



Title Plan - LT 577388

Created Parcels

Parcels	Parcel Intent	Area	RT Reference
Area F Deposited Plan 577388	Easement		
Total Area		<hr/> 22.2031 Ha	

Schedule / Memorandum

Land Registration District

North Auckland

Plan Number

DP 577388

Territorial Authority (the Council)

Auckland Council – TA Reference: SUB0145/19

Memorandum of Easements in Gross (Pursuant to s243 Resource Management Act 1991)			
Purpose	Shown	Burdened Land	Grantee
Right to drain Water	A	Lot 845 hereon	Waikato District Council
Right to drain Sewage and Water	B	Lot 832 hereon	
	D	Lot 821 hereon	
	E	Lot 822 hereon	
	F	Lot 823 hereon	
	Y	Lot 829 hereon	
Right to drain Sewage	C	Lot 819 hereon	
	G	Lot 828 hereon	
	N	Lot 817 hereon	
	O	Lot 816 hereon	
	P	Lot 815 hereon	
	Q	Lot 814 hereon	
Right to convey Water Right to drain Water and Sewage	X	Lot 818 hereon	
	S	Lot 1 hereon	
	T	Lot 2 hereon	

Schedule / Memorandum

Land Registration District

North Auckland

Plan Number

DP 577388

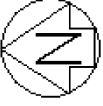
Territorial Authority (the Council)

Auckland Council – TA Reference: SUB0145/19

Schedule of Easements in Gross			
Purpose	Shown	Burdened Land	Grantee
Right to convey Telecommunications	S	Lot 1 hereon	Chorus New Zealand Limited
	T	Lot 2 hereon	
Right to convey Electricity	S	Lot 1 hereon	Counties Power Limited
	T	Lot 2 hereon	

That Lot 1 hereon (legal access) be held as to two undivided one-half shares by the owners of Lots 839 and 840 DP 577388 as tenants in common in the said shares and that individual records of title be issued in accordance therewith. (See LINZ request 1589300)

That Lot 2 hereon (legal access) be held as to two undivided one-half shares by the owners of Lots 835 and 836 DP 577388 as tenants in common in the said shares and that individual records of title be issued in accordance therewith. (See LINZ request 1589300)



T 1/5

Land District: North Auckland

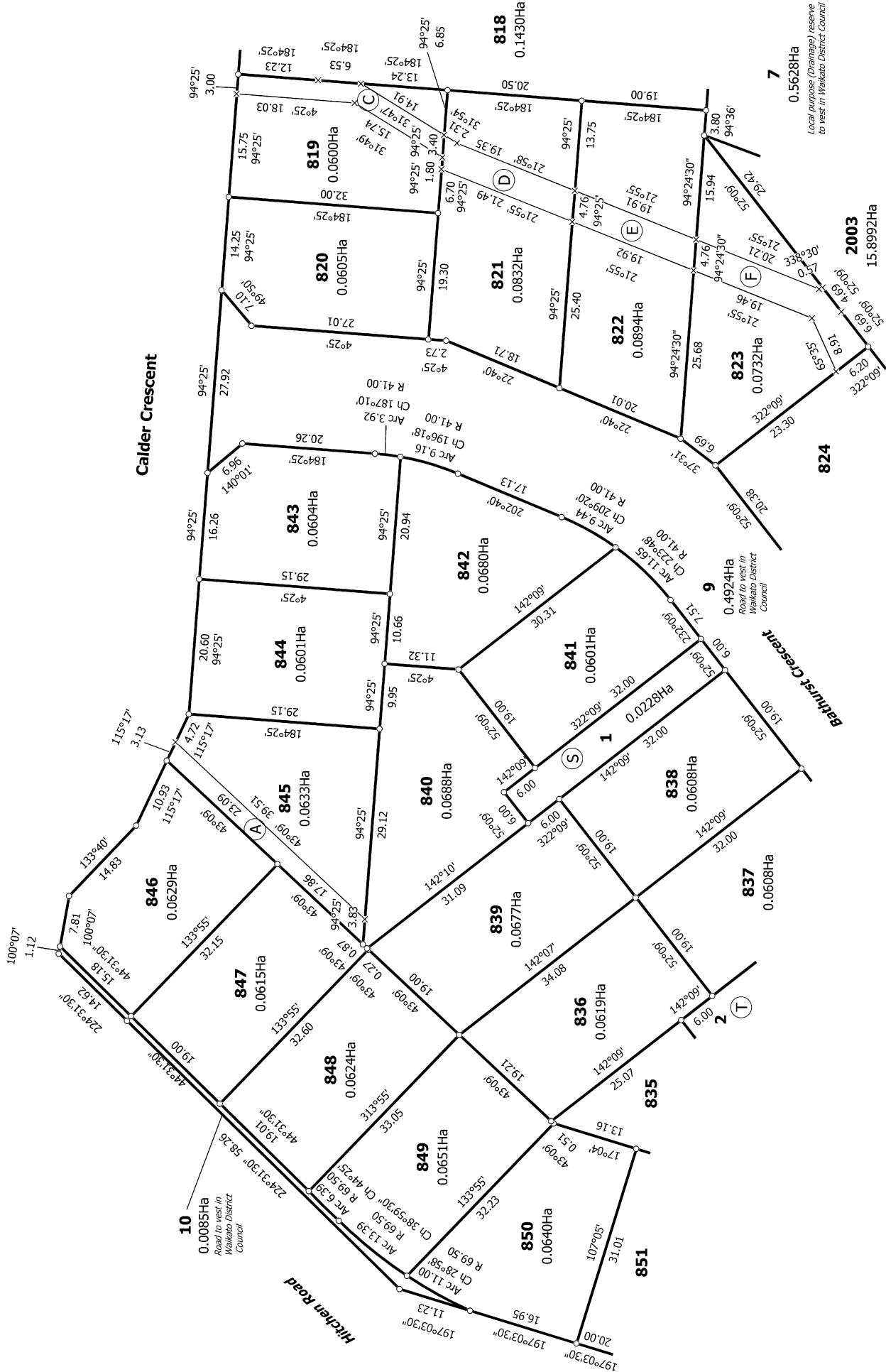
Digitally Generated Plan

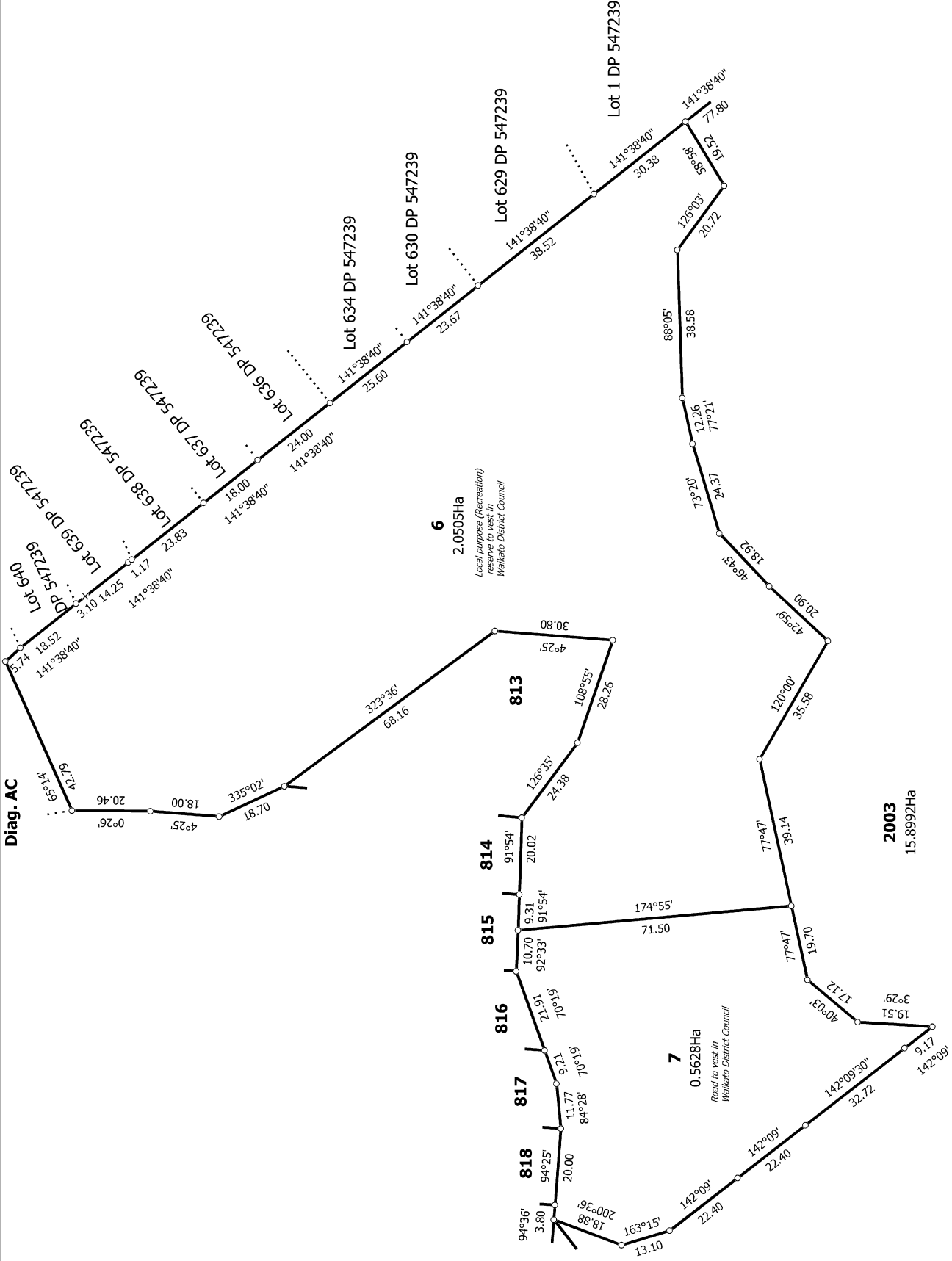
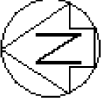
Generated on: 20/05/2022 2:08pm Page 6 of 10

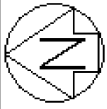
Lots 1, 2, 6, 7, 9, 10, 11, 813 - 854 Being a Subdivision of Lot 2000 DP 547959

Surveyor: Campbell Lloyd Harvey
Firm: Civilplan Consultants Limited

**Title Plan
LT 577388
DRAFT**

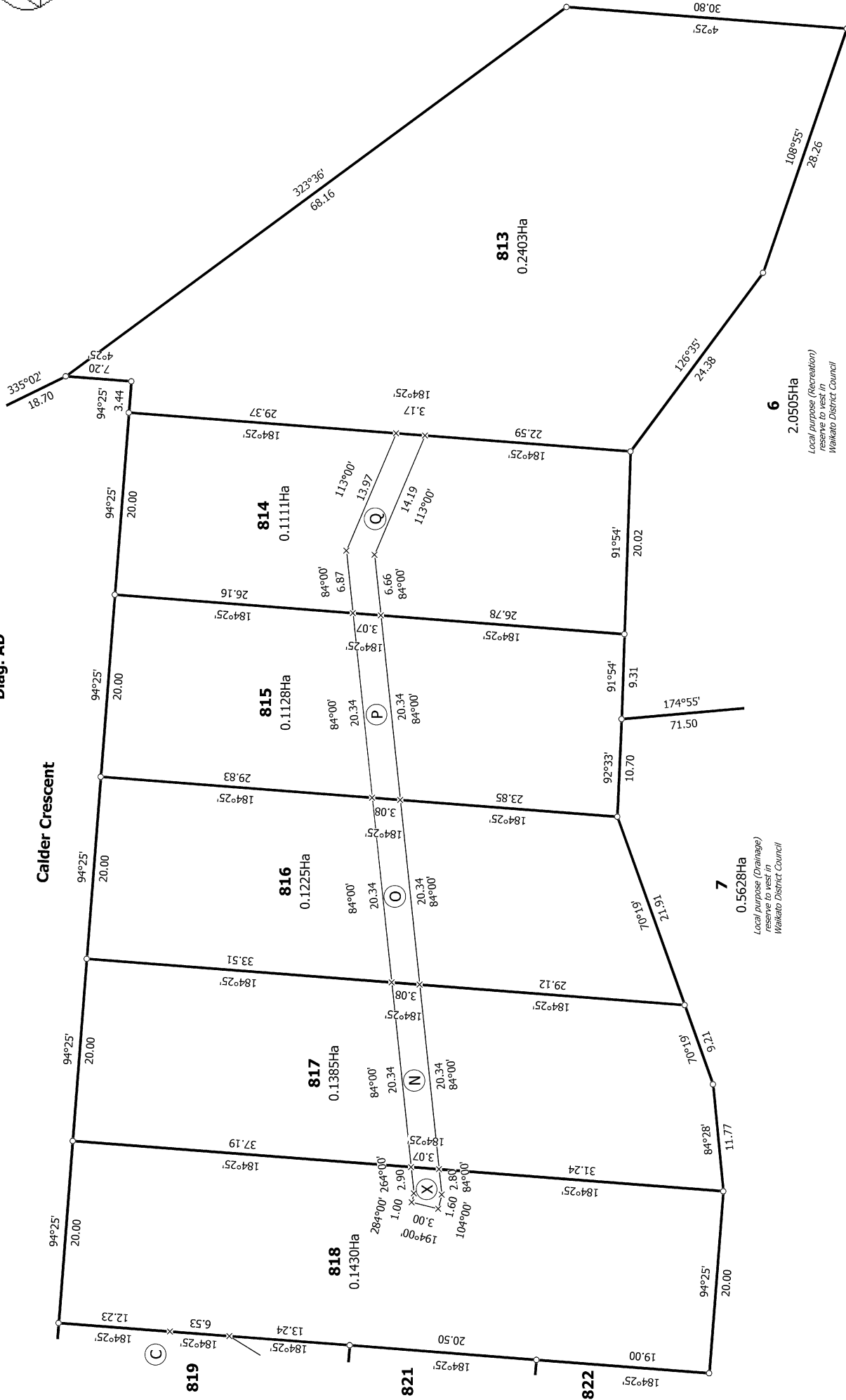






Diag. AD

Calder Crescent



<p>Land District: North Auckland</p> <p>Digitally Generated Plan</p> <p>Generated on: 20/05/2022 2:08pm Page 10 of 10</p>	<p>Lots 1, 2, 6, 7, 9, 10, 11, 813 - 854 Being a Subdivision of Lot 2000 DP 547959</p>	<p>Surveyor: Campbell Lloyd Harvey</p> <p>Firm: Civilplan Consultants Limited</p>	<p>Title Plan</p> <p>LT 577388</p> <p>DRAFT</p>
--	---	---	--